

Barnyard Babies

BY TWO CAN ART



Stable Mates Quilt
designed by: **Janet Houts**

Quilt Size: 50" x 68"
Pillow Size: 24" x 24"

andoverfabrics.com

About Barnyard Babies

Welcome to the Barnyard! There's a down-home comfort in our Two Can Art Barnyard Babies Collection. We capture every moo, cluck, neigh and oink with our sweet animal close-ups, perfect for your next project. — *Patti Gay*

andover



makower.uk
Concord Fabrics UK Ltd

Free Pattern Download Available

1384 Broadway New York, NY 10018
Tel. (800) 223-5678 • andoverfabrics.com

Stable Mates Quilt



Introducing Andover Fabrics new collection: **BARNYARD BABIES** by Two Can Art
Quilt designed by Janet Houts

Quilt finishes 50" x 68"
13 Block Y: 6" x 6"
13 Block Z: 6" x 6"
Pillow finishes 24" x 24"

Cute and cuddly and sure to delight, the animals on the center panel are the focus of this crib-size quilt. Log Cabin blocks, paisley, and "wood" prints frame the animals. The project is so, so easy, you'll have time to make one in a jiffy for that baby shower. The pillow is a bonus.

Cutting Directions

Note: Read assembly directions before cutting patches. All measurements are cut sizes and include 1/4" seam allowances. Borders are cut the exact lengths required plus 1/4" seam allowances. The outer mitered border (Fabric G) includes extra length for insurance. WOF designates the width of fabric from selvedge to selvedge (approximately 42" wide).

Fabric A

Fussy-cut (1) panel 21 1/2" x 40 1/2", cut crosswise

Pillow:

Fussy-cut (1) square 10" x 10" of the animal of your choice

Fabric B

Cut (2) side borders 2" x 40 1/2", cut crosswise
Cut (2) top/bottom borders 1 1/2" x 24 1/2", cut crosswise
Cut (7) strips 2 1/2" x WOF for binding
Cut (26) squares 1 1/2" x 1 1/2"

Pillow:

Cut (2) borders 1 3/4" x 12 1/2"
Cut (2) borders 1 3/4" x 10"

Fabric C

Cut (5) strips 3 1/2" x WOF, cut crosswise and pieced to make:

(2) side borders 3 1/2" x 54 1/2"
(2) top/bottom borders 3 1/2" x 42 1/2"

Pillow:

Cut (2) borders 2 1/2" x 18 1/2"
Cut (2) borders 2 1/2" x 14 1/2"

Fabric D

Cut (26) strips 1 1/2" x 4 1/2"
Cut (26) strips 1 1/2" x 3 1/2"

Pillow:

Cut (13) squares 1 1/2" x 1 1/2"

Fabric Requirements

		Yardage	Fabric
**Fabric A	blocks	1 panel (2/3 yard)	133-B
*Fabric B	border, blocks	1 yard	8803-B
Fabric C	border	3/4 yard	8803-BR
Fabric D	blocks	3/8 yard	8805-BR
Fabric E	border	1/2 yard	8805-KC
Fabric F	blocks	1/4 yard	8805-N
*Fabric G	border	1 1/4 yards	8587-KL
Fabric H	blocks	3/8 yard	8587-KN
Fabric I	blocks	1/4 yard	8587-KN1
*Backing		3 1/4 yards	8803-B

*includes binding

****Note:** Purchase a second Fabric A panel if you are making the pillow. The pillow backing requires 3/4 yard of your chosen fabric. Yardage for the quilt is sufficient to make the borders for one pillow.

Fabric E

Cut (13) strips 1 1/2" x 6 1/2"
Cut (13) strips 1 1/2" x 5 1/2"
Cut (26) strips 1 1/2" x 2 1/2"
Cut (26) squares 1 1/2" x 1 1/2"

Pillow:

Cut (13) squares 1 1/2" x 1 1/2"

Fabric F

Cut (13) strips 1 1/2" x 6 1/2"
Cut (13) strips 1 1/2" x 5 1/2"

Pillow:

Cut (26) squares 1 1/2" x 1 1/2"

Fabric G

Cut (7) strips 4 1/2" x WOF, cut crosswise and pieced to make:
(2) side borders 4 1/2" x 70 1/2" (extra length for miter)
(2) top/bottom borders 4 1/2" x 52 1/2" (extra length for miter)

Pillow:

Cut (4) borders 3 1/2" x 26 1/2" (extra length for miter)

Fabric H

Cut (26) strips 1 1/2" x 5 1/2"
Cut (26) strips 1 1/2" x 4 1/2"

Fabric I

Cut (26) strips 1 1/2" x 3 1/2"
Cut (26) strips 1 1/2" x 2 1/2"

Backing

Cut (2) panels 38" x 58", pieced to fit quilt top with overlap on all sides

Stable Mates Quilt

Making the Quilt

1. Fussy-cut the Fabric A panel, eliminating the outer teal frame. Sew longer Fabric B borders to the sides and shorter borders to the top and bottom.
2. Referring to the Block Y diagram, sew the $1\frac{1}{2}$ " strips around the Fabric B square in a counterclockwise direction to make a block. Press all seam allowances away from the Fabric B square. Make 13 Block Y. Likewise, make 13 Block Z.
3. Referring to the Quilt Diagram, join 4 Block Y alternately with 3 Block Z to make the left side border, rotating the blocks as shown. Sew to the left side of the quilt. Join 4 Z Block with 3 Y Block to make the right side border. Sew to the right side. Join 3 Block Z and 3 Block Y to make the top border. Sew to the top of the quilt. Repeat for the bottom.
4. Sew Fabric C borders to the sides, and then to the top and bottom.
5. Join Fabric G border strips to make the lengths needed, matching the print so the design looks continuous. Sew the borders to the quilt, starting and stopping stitching $\frac{1}{4}$ " from the quilt's raw edge. Miter the corners and trim the excess.

Finishing the Quilt

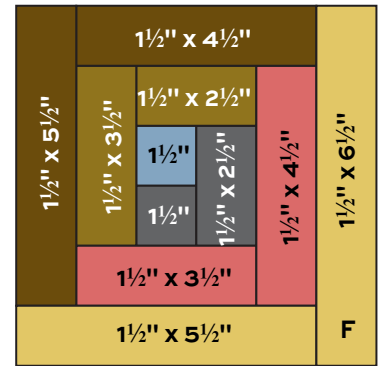
6. Layer the quilt with batting and backing and baste. Quilt in the ditch around borders and block patches. Quilt around the printed motifs in the panel. Bind to finish the quilt.

Making the Pillow

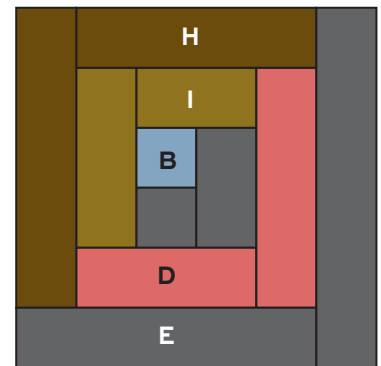
1. Refer to the Pillow Diagram for these steps. Fussy-cut a 10" square of your chosen animal from Fabric A. Sew Fabric B borders to the center square, sides on first.
2. Position the Fabric D, E, and F squares around the pillow until the placement matches the diagram. Join 3 Fabric D squares, 3 Fabric E squares, and 6 Fabric F squares in the order shown to make a side pieced border. Sew to the pillow. Repeat for the opposite side. Join the appropriate squares in the order shown to make the top border. Repeat for the bottom border.
3. Sew Fabric C borders to the pillow, sides on first.
4. Sew Fabric G borders to the pillow, referring to Step 5 for the quilt to miter the border.

Finishing the Pillow

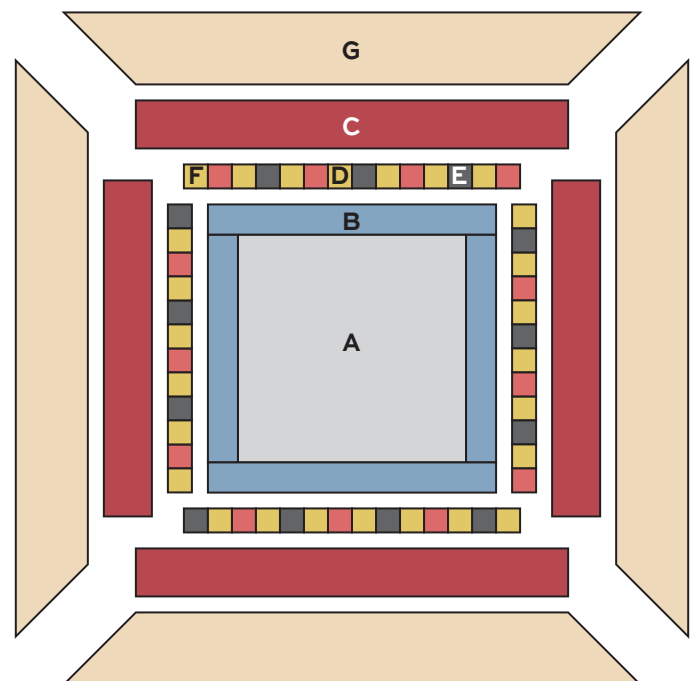
5. If you wish to quilt the pillow, layer and baste the top, batting, and a muslin lining. Quilt as you wish.
6. Cut a backing square the same size as the pillow top. With right sides together, position the pillow on top of the backing square. Stitch around the edges, leaving a 4"-6" opening along one side. Round the corners if you wish. Turn the pillow right side out and fill with polyfil stuffing or a pillow form. Stitch the opening closed.



Block Y – Make 13

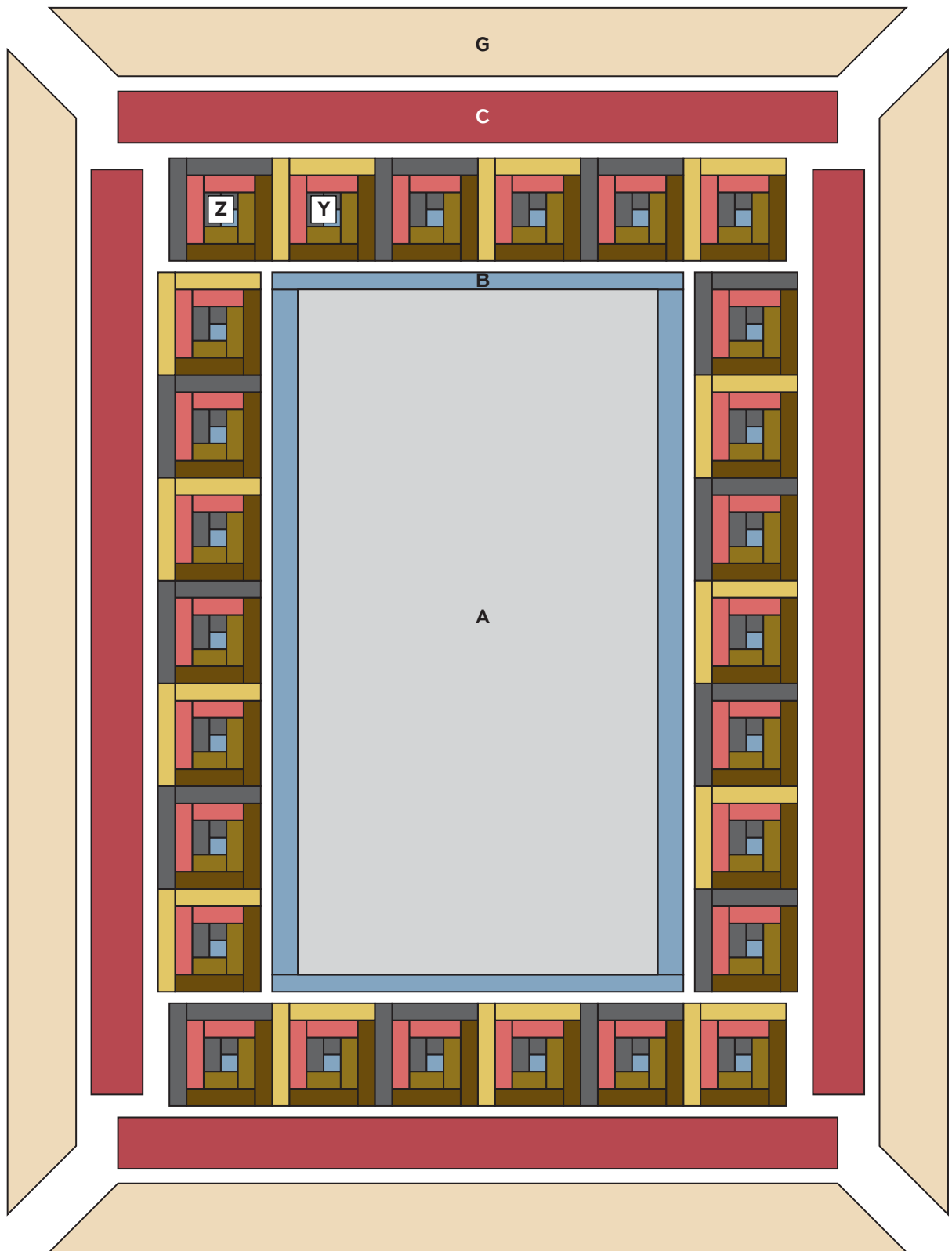


Block Z – Make 13



Pillow

Stable Mates Quilt

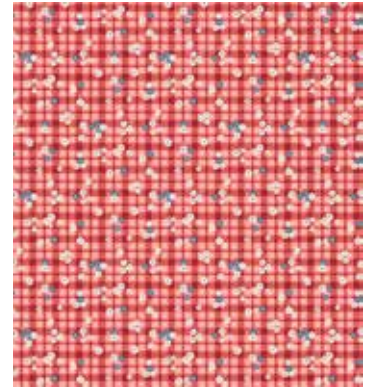


Quilt Diagram

Barnyard Babies BY TWO CAN ART



8803-B*



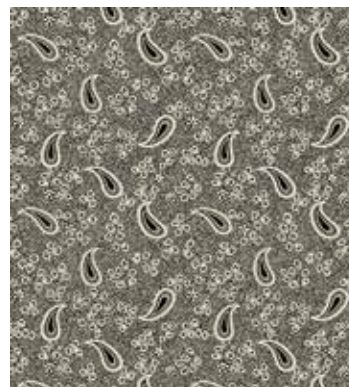
8805-BR*



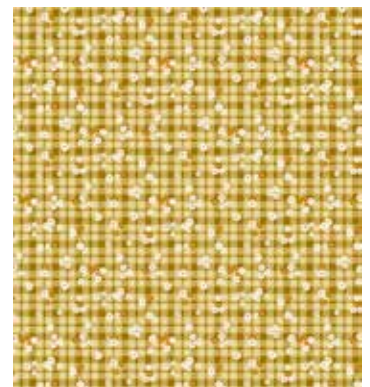
8803-BR*



8805-KC*



8803-KC



8805-N*



8364-G



8364-N1



8587-KL*



8587-KN*



8587-KN1*

*Indicates fabrics used in quilt pattern.
Fabrics shown are 15% of actual size.

andover



makower uk
Concord Fabrics UK Ltd

Free Pattern Download Available
1384 Broadway New York, NY 10018
Tel. (800) 223-5678 • andoverfabrics.com